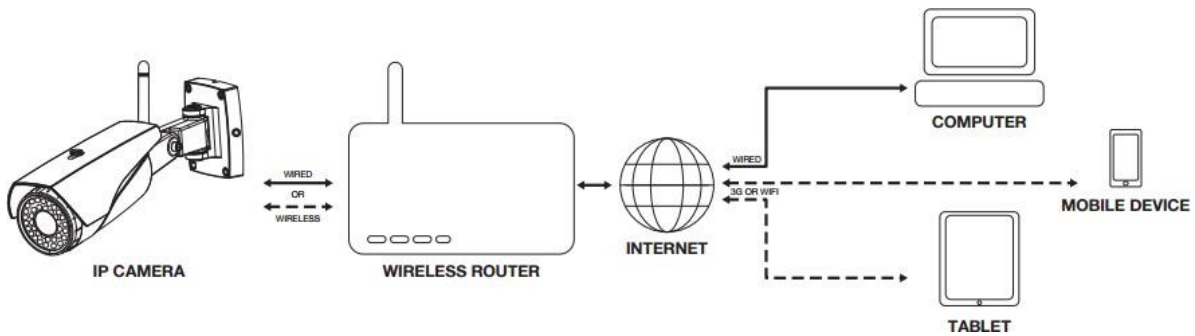


## Instruction Manual

### Wi-Fi Full HD 1080p IP Concealed Junction Box Hidden Camera





## Hardware Installation

### 1. Connect the power supply

Connect the included AC/DC adapter to plug into the electricity outlet/socket, then connect it to the camera.

### 2. Connect the Ethernet cable

It's recommended to use the Ethernet wired connection when firstly setup the camera (if Ethernet port is available on your camera), especially if you failed to setup the camera via WiFi. Connecting the camera to the router with the network cable.

*Note - The Ethernet cable is not required after the camera's Network Settings have been changed to WiFi*

### 3. Reset the camera

If you want to setup the WiFi connection instead of using wired Ethernet cable, you should reset the camera at the beginning of configuration. Using a sharp object (e.g. toothpick) to press the reset button up to 10 seconds, release it until you hear a "Sou" tone. Once the camera keeps making "di, di, di" sound, then you can start to add the camera via 'Smartlink'.

*Note - The camera only supports 2.4GHz WiFi, can't support 5GHz. Making sure the WiFi SSID has no special character, also DHCP function should be enabled in your router.*

## App Operations

### Yoosee (Android & iOS App)

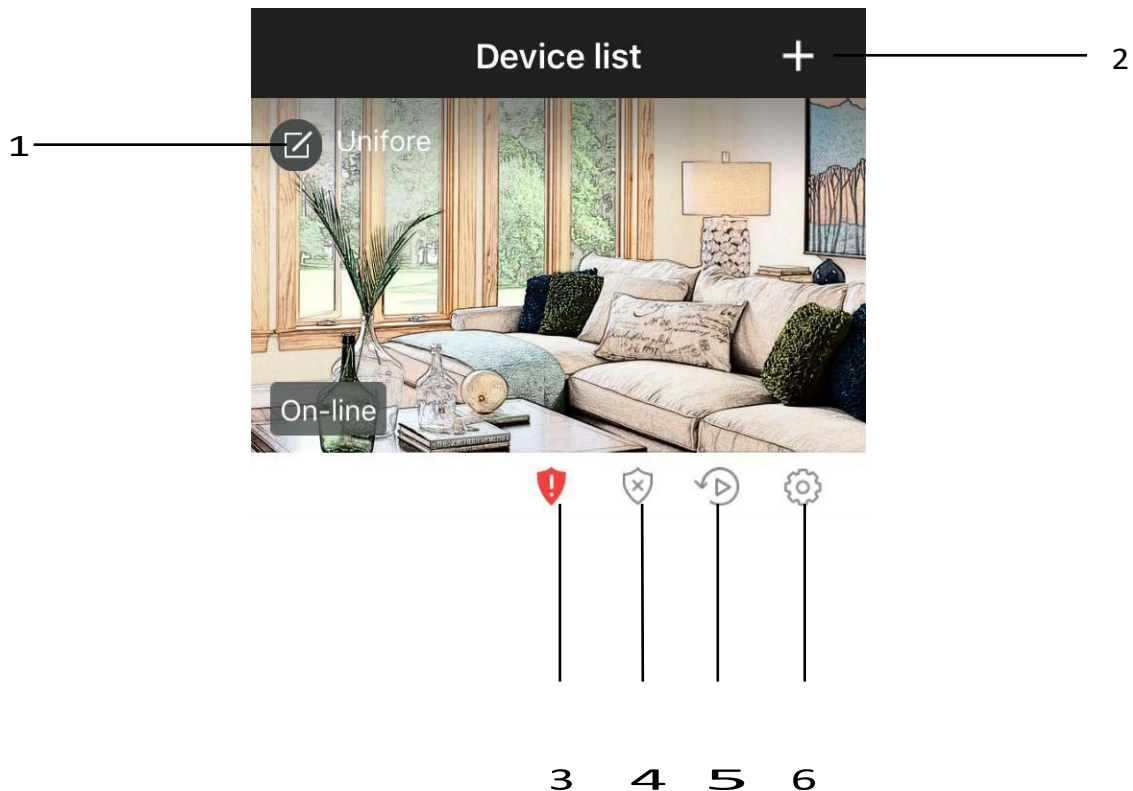
#### Downloading Yoosee

1. Using an Android device; install the 'Yoosee' app from the Google Play Store\*
2. Using an Apple device; install the 'Yoosee' app from iTunes App Store\* Once the app has downloaded and completed installation, launch the app.

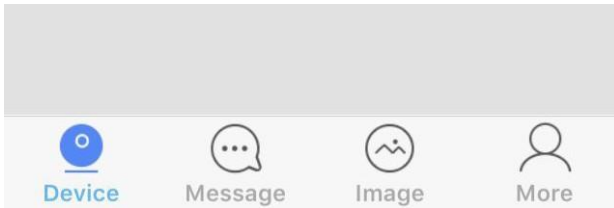
#### Logging into your Yoosee Account

If this is your first time using Yoosee you will need to create an account. Select 'Register' at the bottom of the Yoosee login screen and follow the steps to create a new account.

To log in to Yoosee, enter your email and password into the fields provided, then press 'Login'.



1. Edit the device information, customize the name.
2. Add the camera, either by using 'Smartlink' or 'Manual'.
3. Weak password warning.
4. Arm(activate)/Disarm(de-activate) response for detection. If armed, the camera will notify your device of any motion detection using the alarm settings
5. Playback the video footage recorded in microSD/SDHC memory card.
6. Control the camera's local setting here.

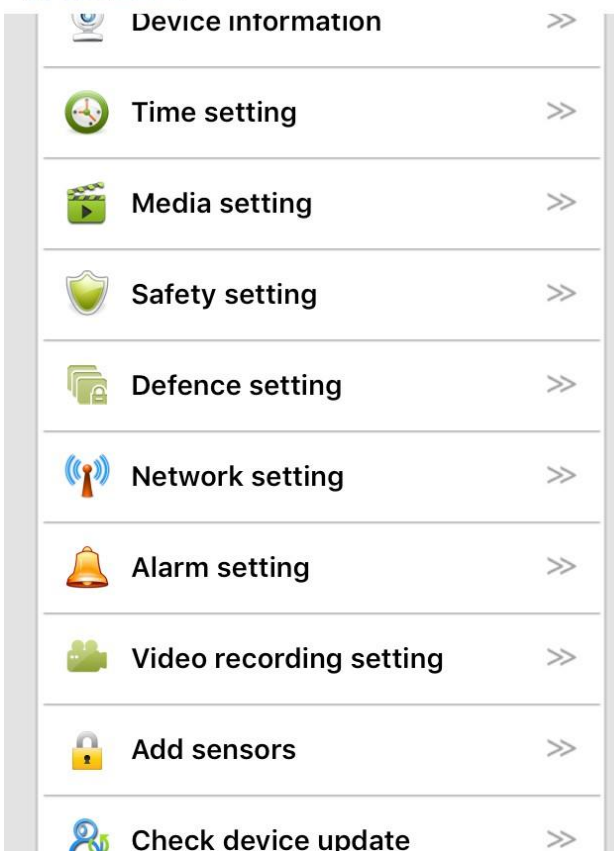
**Main Screen**


Device: Listed the connected devices.

Message: Alarm logs

Image: Screenshot captured by the camera

More: Edit account information, modify App login password, and logout.

**Camera's Setting**


**Device info:** Check the version of your camera's firmware

**Time settings:** Set the date and time of your IP camera

**Media setting:** Change between 50Hz and 60Hz video format, and reverse the camera image if required

**Security setting:** Modify the camera admin password and create a guest password

**Network setting:** Change between Ethernet and WiFi modes

**Alarm setting:** Be alerted of any motion detection

**Video Record setting:** Choosing the record modes among manual, schedule, alarm

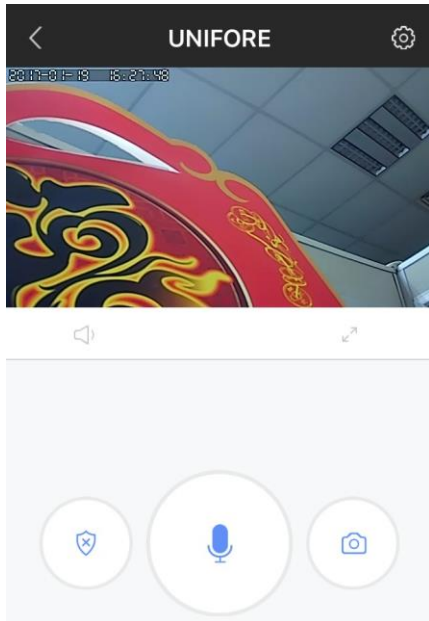
**Add sensors:** Pair the remote control or wireless security detectors to the camera

**AP mode:** Switch to AP mode, so camera can directly connect with smartphone without Internet connection.

**Device Update:** Check for the latest camera firmware

*Note – If you failed to upgrade the camera's firmware, please choose another time (network speed is the best and less congestion) to have a try. During the update, don't disconnect the power supply. If the firmware corrupts, using the IP camera debug software to update its firmware manually.*

## Camera Viewer



**Number of Viewers:** A maximum of 5 viewers can view the same camera feed

**Expand View:** Change from portrait to full screen landscape viewing mode

**Previous Snapshots:** Scroll through and quickly access your previous snapshots

**Speaker:** Sound or Mute

**Intercom:** Touch intercom icon to speak with your camera

**Snapshot:** Press to capture a screenshot and save it directly onto your smartphone

## Viewing your Camera

1. From the 'Device list' menu, ensure that the camera's status is on-line. Press the large camera image icon to launch the camera viewer
2. After a link has been established, the camera feed will be shown in the window
3. Press the 'SD' symbol to change between low, standard and high definitions
4. Press the ↗ symbol to launch into full screen landscape mode
5. Using two fingers, pinch or expand to zoom in and out of the camera feed

## Taking a Snapshot

While viewing your camera feed, press the  button to take a snapshot. Quickly view past snapshots below the camera feed display.

## Setting up Alarm Notifications

1. From the 'Device list' menu, press the camera settings button
2. Press 'Alarm Settings' and ensure that 'Motion Detection' is turned on
3. To receive alarm email notification, turn on 'receive alarm message'
4. Press back until you return to the 'Device list' menu, and then ensure that the camera lock button is set to 'locked'

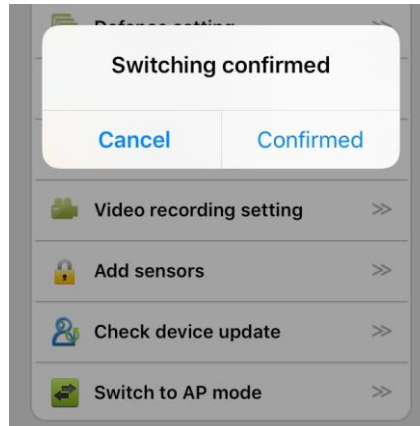
## Pair with Security Detectors

Depending on your camera, it may support 'Add sensor/Defence area' function to work with up to 64 wireless security detectors. The wireless specification for wireless detectors is 433.92MHz (regular) or 868MHz (newest). Pairing with security detectors to the camera only takes two simple steps.

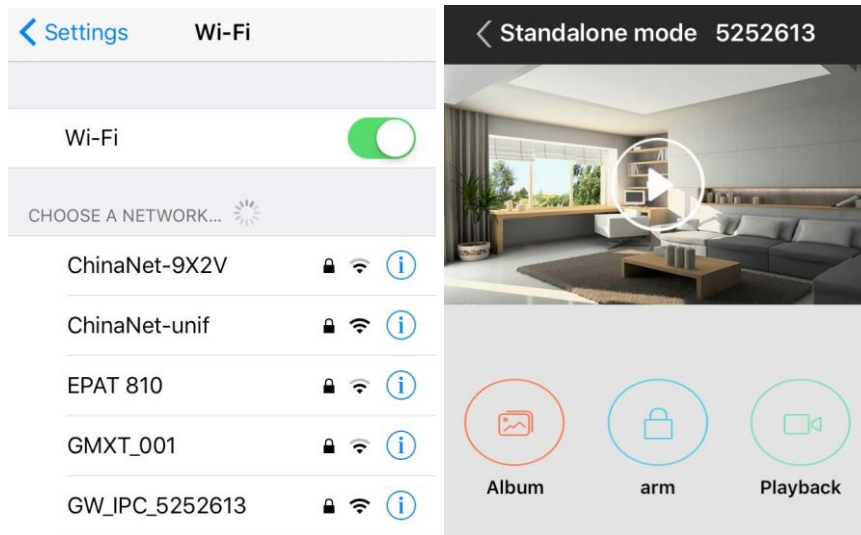
1. From camera's setting, click 'Add sensor', then 'Sensor' to make ready to add the sensor.
2. Trigger the sensor twice to emit wireless radio signal, once App pop-ups 'Success', then it's done.

### Switch to AP mode

1. From camera's setting menu, click 'Switch to AP mode', click 'Confirmed' to enter the AP mode, then the camera will reboot.

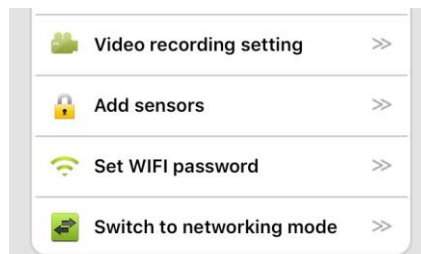


2. Go to your smartphone's settings, select 'Wi-Fi' setting, you will find a new WiFi SSID which has prefix GW\_IPC from the available network list. Connecting this WiFi SSID, and input the default password '12345678'.



3. Launching the Yoosee App, enter device AP mode, press the large image icon to launch the camera viewer.

4. From camera's settings, choose 'Switch to networking mode' to switch to normal Internet mode, the camera will reboot.



*Note – For Android Smartphones, the App can automatically find the IP camera in AP mode. Click 'Discover 1 new deices' then input WiFi password (default 12345678) to add the camera. If it has connection timeout issue, you may manually change the camera's WiFi password in your smartphone's WiFi setting (some Android system disallow App to modify the password).*

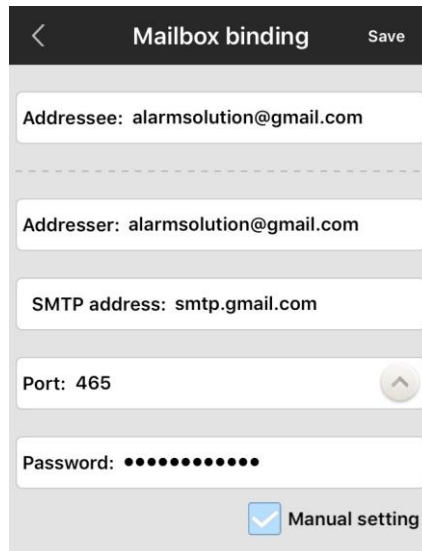


## Alarm mailbox

In addition to receiving push notifications, users can also receive the email (attached with captured pictures) alerts once an alarm occurs. To receive the email, users should go to 'Alarm setting', 'Alarm mailbox' to bound the email account. Once it's done, the camera will access your SMTP server to send emails.

1. Mailbox, enter your valid email address, then select the mailbox domain.
2. Password, enter your email's password.

If you can't find your email domain from the domain list, then you can click 'Manual setting' to fill your own SMTP account info.

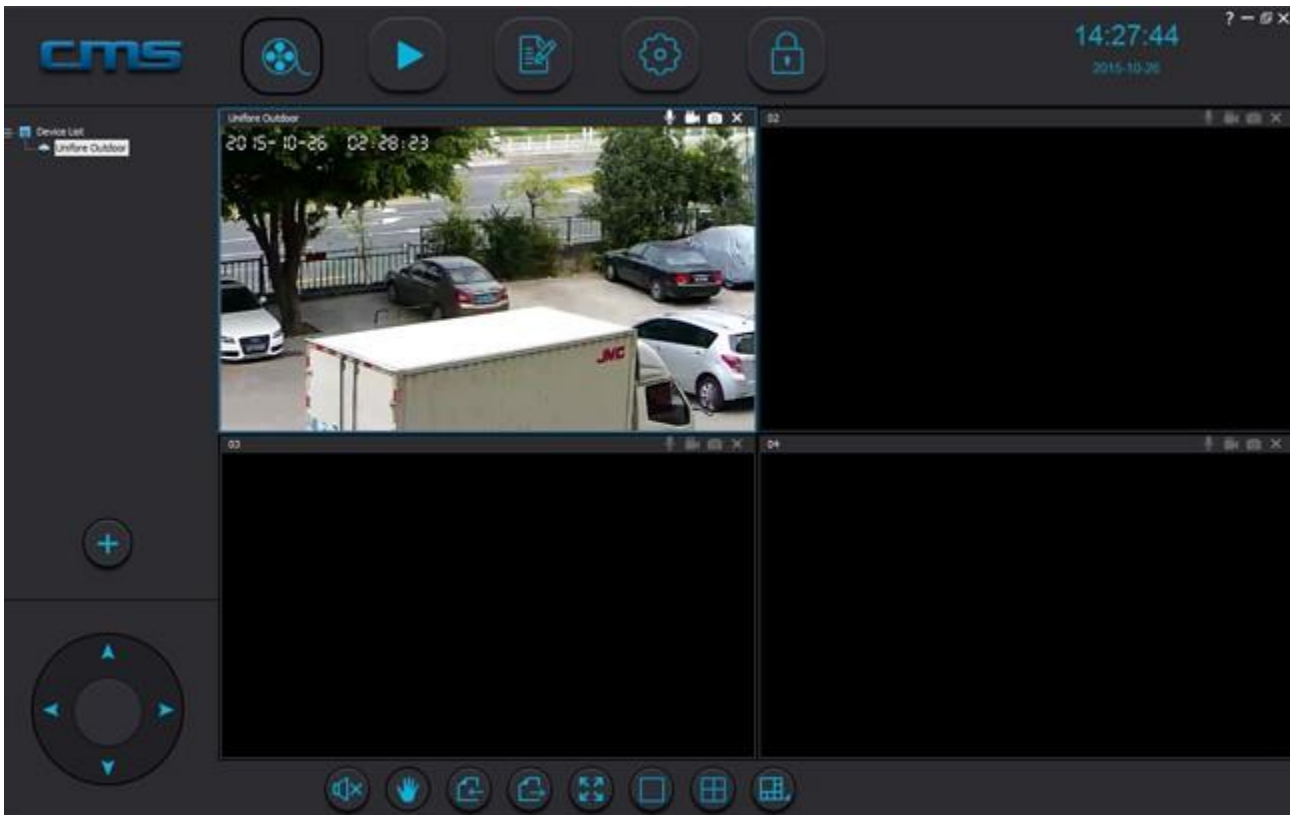


The screenshot shows a mobile app interface for 'Mailbox binding'. At the top, there is a back arrow and a 'Save' button. Below are several input fields: 'Addressee: alarmsolution@gmail.com', 'Addresser: alarmsolution@gmail.com', 'SMTP address: smtp.gmail.com', 'Port: 465' with an up arrow icon, and 'Password: ●●●●●●●●'. At the bottom, there is a checked checkbox labeled 'Manual setting'.

- Addressee: receiver's email address
- Addresser: sender's email address (receiver's email and sender's email can be same)
- SMTP address: SMTP server's url, e.g. smtp.gmail.com
- Port: select the right port number according to your server's smtp setting
- Password: enter your email account's password
- Encryption mode: will be changed automatically according to the selected port number.

*Note – Many free and advanced email service providers will defaultly block the smtp connection from App. Before fill the email and save the setting, making sure you have set allow App to access the smtp connection. E.g. If you use gmail account, you need to Allow less secure App to access your gmail account. <https://www.google.com/settings/security/lesssecureapps>*

## CMSSClient Operations



### CMSSClient (Windows Software)

**Preview:** View up to 64 cameras at one time

**Playback:** Allows you to search for previous recordings

**Log:** Check what events have occurred on each camera

**Config:** Configure the CMS Software video storage location and start-up options

**Lock:** To prevent changes to settings, active recordings and window views, use the lock button. A password is required to unlock

### Setup CMSSClient on Windows:

1. Download link: <http://dl1.cloudlinks.cn:8765/dl/rar/CMS.rar>
2. Extract RAR rar, click CMSSetup.exe and install
3. Once installation is complete, right click on the CMSSClient icon and select 'Properties'
4. In the 'Compatibility' tab, ensure that 'Run this program as an administrator' is ticked, then press 'OK'
5. Double click the CMSSClient icon to start the program.



## CMSClient Login

### 1. Option A: Local Login

If you will be using the CMS software on the same network as the IP Camera, follow these steps to log in and view your camera

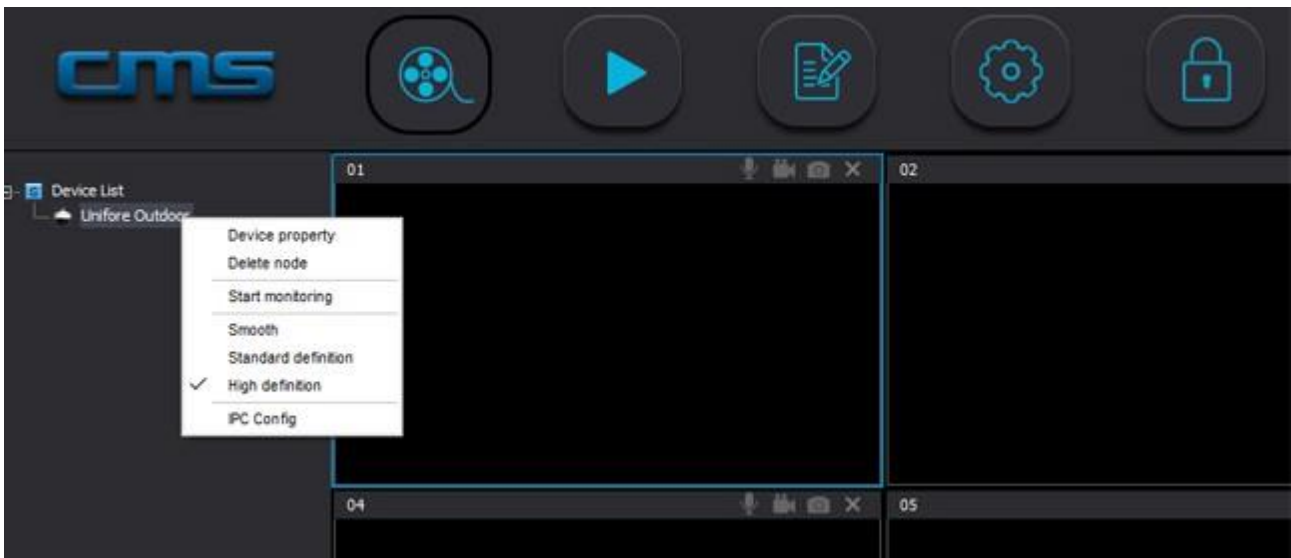
- Select 'Local login' from the login type dropdown box
- In the user field, enter: 'admin'
- In the password field: don't enter anything, or enter, '00000000' (8 zeros)
- Press 'OK'
- If a new camera has been detected, ensure the password matches the camera (by default, the IP Camera password is '123'), then press 'AddAll' to add the new device.)

*Note – Local login does not support alarm recording. It is recommended to create a Yoosee account and login using 'Remote Login'.*

### 2. Option B: Remote Login

Linking CMSClient with your Yoosee account allows you to log in from a remote location, or separate network. Follow these steps to log in and view your camera

- If you do not have a Yoosee account, follow the steps in the Yoosee section to create one
- Select 'Remote login' from the login type dropdown box
- In the user field, enter your Yoosee email account
- In the password field, enter your Yoosee password
- Press 'OK'
- Cameras added to your Yoosee account can now be viewed

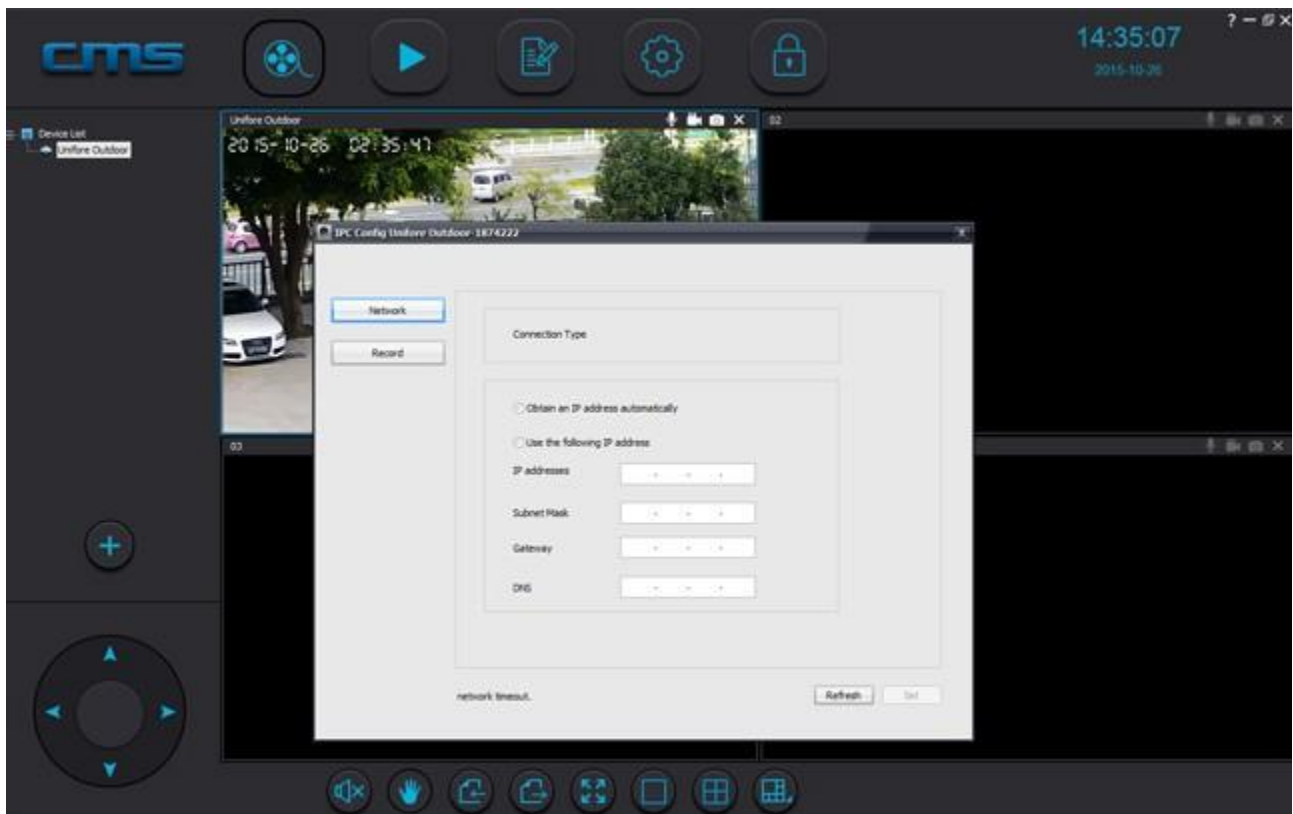


### Viewing your Camera

1. On the left side of the 'Preview' page, all of your camera devices will be listed. Right click on your camera and select 'Start Monitoring' from the menu.
2. To expand the viewing window, select the '1 Window' button from the bottom menu. You can also select different viewing layouts using the 'Select Window' button.
3. To change the quality of the feed, right click on your camera feed window and select between 'Smooth', 'Standard Definition' and 'High Definition'.

### Config Camera

The CMSClient software permits users to config smart IP cameras remotely. Selecting the camera you want to config, right click mouse, then choose 'IPC Config'. Now, you will see Network and Recording tabs.




As default, IP camera obtains local IP address automatically. However, intend to get a static IP address, you can manually assign an local IP address to the camera. This can prevent it from being offline every time your router changes setting. As default setting, the network camera will record standard definition video clips. Go to Recording tab, you can switch to High Definition recording mode.

## Recording Video


The CMSClient software permits users to config smart IP cameras remotely. Selecting the camera you want to config, right click mouse, then choose 'IPC Config'. Now, you will see Network and Recording tabs.

1. To commence recording, select the  button at the top right corner of the camera viewing window. The icon will change to a blue colour.

2. To stop recording, press the  button again.

*Note: If using more than one camera, right-click on 'Device List' and select 'All Start Recording' and 'All Stop Recording' to control the recording*

## Capturing an Image

To capture an image, select the  button at the top right corner of the camera viewing window. The icon will change to a blue colour. A popup will indicate that the image has been saved.

## Playback Menu

To search through and playback recorded footage, follow these steps

1. Select 'Local recordfile'
2. Select your camera device from the device menu
3. Change the 'begin' and 'end' time to your desired search range, then press 'Search'
4. Your record files will be shown on the left. Double click a file to commence playback

## Log Menu

To check events that have occurred on each camera, follow these steps

1. Select either 'Alarm' or 'Operation' from the log type
2. Select either 'All device' or your specific device from device name
3. Change the 'begin' and 'end' time to your desired search range, then press 'Search'
4. Your logged data is then listed below. To back-up the data as a .txt file, select 'Backup', then save the file to your desired location

## Changing File Save Directory

1. If saving to an external hard drive, insert the drive into your computer and note the directory.
2. Select 'Config' from the main menu.
3. Select 'Browse' and navigate to your desired save location. Press 'OK'.

*Note: By default, 1024MB will be reserved on your save location. All other available storage will be used for recorded footage. Maximum record time for each file is 60 minutes*

### Auto Start Settings

Within the 'Config' menu, change the 'Auto start record when monitoring' and 'Connect all of device automatically' options to 'Open' to activate these features

### Alarm Trigger Settings

If connected to your Yoosee app, alarms can also be received by the CMSClient software

1. Select 'Config' from the main menu
2. Within the 'Alarm trigger' tab, change the 'Pop video' option to your desired time. This is the time that a video will be shown full screen if the alarm is activated
3. Select the buzzer type for your desired sound
4. Press 'Save'



### Adding a New Camera

If your camera is not automatically detected by CMS on start-up, follow these steps

1. Ensure your computer has an active network connection
2. On the preview screen, select the '+' button
3. Your camera should be shown on the list. To add, simply highlight your camera and press 'OK'

*Note - If your camera is not shown, enter the unique '3CID' and 'Device Password' found on the outside of your IP Camera. Press 'OK' to add your camera.*

### Convert .AV file to MP4

Using the CMSClient software, users can convert the encrypted AV video file to web-friendly MP4 file. From 'Playback'  , on the right bottom of the page, click  button to start convert AV files to MP4.

## FAQ's

Question	Solution
Why isn't my camera working?	Ensure that the power adaptor is connected to your IP Camera, and that the power is turned on. Check that the IR LED night mode detection is working by covering the camera lens with your hand and waiting for a 'click' sound, indicating the camera has changed between day and night modes.
Why isn't my camera connecting to my network?	Ensure that both Wi-Fi and Ethernet setup methods have been attempted. If both methods are unsuccessful, it may be a problem with your router's security settings.
Camera can not connect to WiFi or WiFi connection is unstable	<ol style="list-style-type: none"> <li>1. From the camera "Network Settings" page, check to see if the camera can see your wireless router, and check to see if your phone or other wireless device can connect to your wireless router, also check the Wifi signal strength, if Wifi signal is very weak, login to your wireless router and change the Wifi channel to get better signal strength.</li> <li>2. Camera only supports Wifi 2.4 GHz, recommended wireless encryption is WPA-AES / WPA2-AES, do not use TKIP. Wifi SSID should not have special symbol or space character.</li> <li>3. Distance from the camera to Wifi router is too far? Use Wireless extend to extend the Wifi coverage.</li> <li>4. Make sure DHCP is enabled on the Wifi router. Turn off the AP Isolation mode, turn off the Wireless Access Control or Mac Address Filtering.</li> </ol>
How the microSD/SDHC Card recording works?	After inserting the TF card then reboot, If memory card storage size is lower than 800M, will not record. If the camera is recording, storage size left approximate 400M, begin to erase the oldest video footage.
Can the camera work with NVR?	This camera is compliant ONVIF standard (2.4 version, Profile S), it can work with third-party NVRs & VMS. ONVIF port: 5000; Device discovery port: 3702. It also supports RTSP stream, the RTSP url address is: Main-stream rtsp://IPadr:554/onvif1 Sub-stream rtsp://IPadr:554/onvif2
My camera stops work I suspect the firmware has corrupted	If your camera stops work because of the firmware issue, you can fix this by manually upgrading its firmware. Method 1: Format your TF card to FAT32, then put the correct firmware to the root folder of the TF card and insert it to the camera. Press the reset button don't release, and connect the power adapter, after 5 seconds, the camera's LED starts to flick, release the reset button, now the camera is updating its firmware. The process takes 5 minutes, when it completes, it will reboot. Method 2: Using the IPC debug tool to force upgrade the camera's firmware.